

# NSD ERP System (V 6.4) Accounting Overview



System Overview | NSD Middle East

23-Dec-08

## Contents

**3 ..... INTRODUCTION**

**7 ..... Log on the NSD System**

**12 ..... NSD ERP – FUNCTIONALITIES SUMMARY**

**14 ..... NSD ERP - Financial Accounting Module (FI)**

18 ..... General Ledger Accounting

19 ..... Cost Center Management

21 ..... Account Receivables

22 ..... Account payables

23 ..... Asset Management & Accounting

24 ..... Accounting Management (Bank Book and Bank Reconciliation)

26 ..... NSD ERP SYSTEM / Financial Module \_ Some Functionalities

**32 ..... RELATED ACTIVITIES**

## Introduction

We prepared this document, as an overview, in order to give you a brief idea about the NSD ERP System, knowing that, even if we put a maximum of information and screen copies, we can never replace a live demonstration.

NSD ERP System includes the following applications and functionalities:

- **Financial (Accounting)**
- **Human Resources (Personnel Administration, Time Management, Payroll, Recruitment, Organization Management.....)**
- **Logistics (Materials Management, Warehousing, Procurement, Purchasing, Inventory.....)**
- **Sales and Distribution and Retails (Point of Sale System)**
- **Production Management**
- **Project Management**
- **Car Management and Transport System**
- **Clinic Management System**
- **Reception and Controlling System**

## NSD ERP SYSTEM

### NSD ERP is an Integrated System.

The individual applications in the NSD ERP System are fully integrated. All data that are used across applications are stored at client level (the client is the highest hierarchical level in the NSD System). Specifications that you make or data that you enter at this level are valid for all company codes and for all other organizational structures. Consequently, you do not have to enter these specifications or data more than once. Central maintenance ensures standardized data.

Customer and vendor master records, for example, are stored centrally and used in the applications Financial Accounting (FI), Sales and Distribution (SD) and Materials Management (MM).

Also, the individual applications exchange data so that business transactions do not need to be entered more than once. For example, invoices that are posted in SD are passed

on to FI, and data that is entered in FI is passed on to other applications. If you use Cost Center Accounting, for example, you can specify a cost center directly when you enter a document, to which the amount entered in the line item, is to be posted.

Since every company area in the NSD System can define its own structure, you should specify how each structure is to be derived from the others, so that data can be transferred from one application to another.

#### NSD ERP SYSTEM APPLICATIONS:

- ✓ **Financial (Accounting)**
- ✓ **Human Resources** (Personnel Administration, Time Management, Payroll, Recruitment, Organization Management.....)
- ✓ **Logistics** (Materials Management, Warehousing, Procurement, Purchasing, Inventory.....).
- ✓ **Sales and Distribution**
- ✓ **Project Management.....**

#### NSD ERP System - Benefits

NSD System provides to various organizations, information management, analysis and powerful reporting tools.

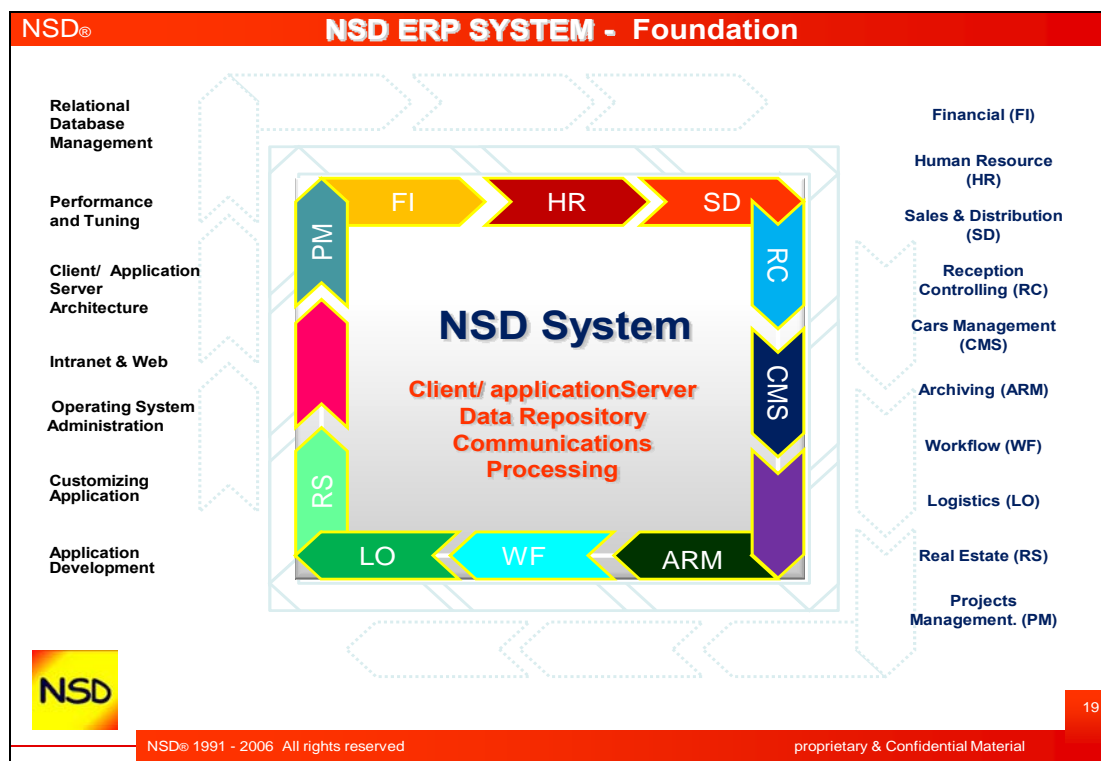
#### Some major NSD ERP System benefits:

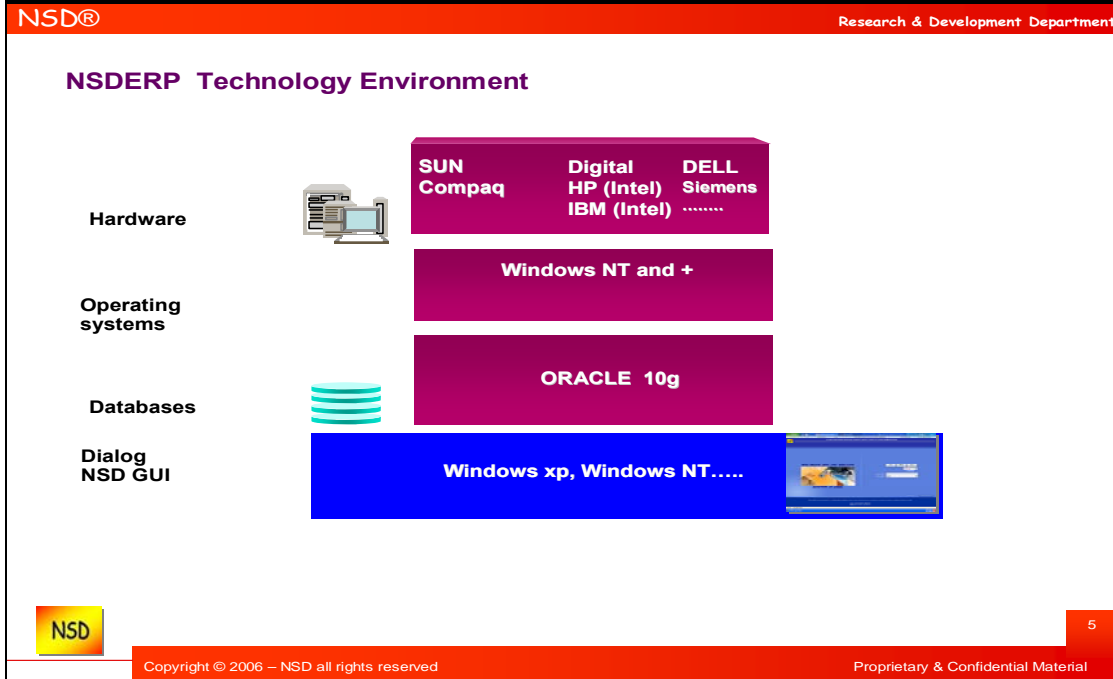
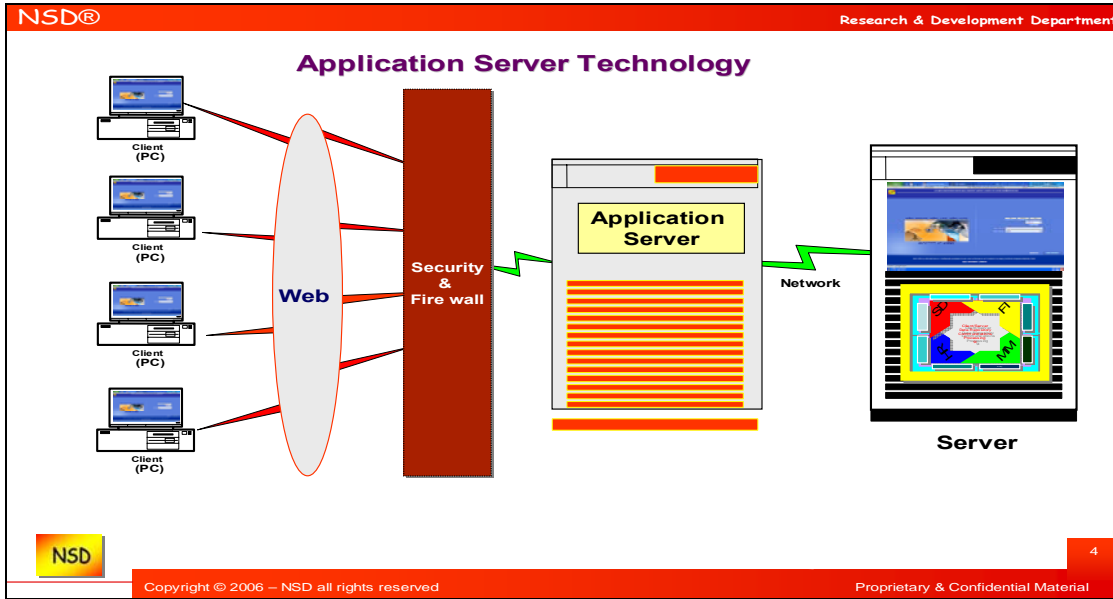
- 📄 **On-line/real time information throughout all the functional areas of an organization**
- 📄 **Data standardization and accuracy across the enterprise**
- 📄 **"Best-practices" included in the applications**
- 📄 **The efficient processes they force an organization to undertake**
- 📄 **The analysis and reporting that can be used for long term planning**
- 📄 **Multi-language, Multi-Currency and Multi-Companies System.....**
- 📄 **The NSD ERP System allows you to manage and perform and present better customer services, greater organizational transparency and increased operational efficiency leading to long-term savings.**

## NSD ERP V6.4 System – Accounting Module – Overview

- The NSD System includes reporting tools for either main reports or for powerful query reports.**
- NSD ERP system, fundamentally, integrates the different processes necessary for businesses into a centralized pool that facilitates data sharing and eliminates redundancy.**
- The NSD ERP System is built and developed based on the best worldwide business practices. It includes the necessary applications for the best enterprise management.**
- The flexibility of the NSD ERP System allows you to add more functionalities and related reports.**

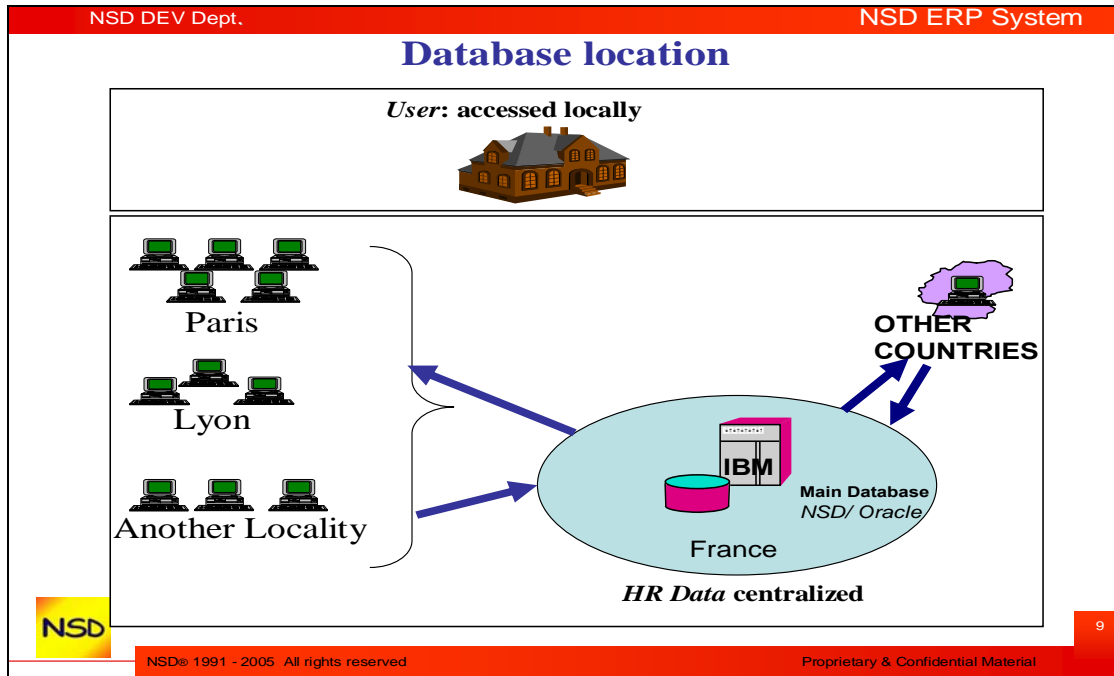
### NSD ERP System Foundation and Technology Environment:





**NSD ERP System - Technical Structure**

**NSD System is based on Oracle Database**  
 NSD System uses a central and main database



### NSD System has a high level system security

That means that the power users, once trained, can change, customize or improve the system.

The NSD SYSTEM is built on a high security level to allow the Power Users to go through the system in a safe way without any risk or access on the database or programs where all sensitive data are stored. In other words, we can say that each user depending on his rights (given by the administrator) can work on the system in safe way.

## System Navigation

### Log on the NSD System

In this step, it is important to mention that the NSD ERP SYSTEM uses ORACLE database and it is developed in an ORACLE environment. The installation of the system is based on the below listed steps:

1. **Preparation of the technical environment (Hardware – Network ...)**
2. **Installation of the database**
3. **Installation of the scripts and forms (the forms are installed in the client level)**

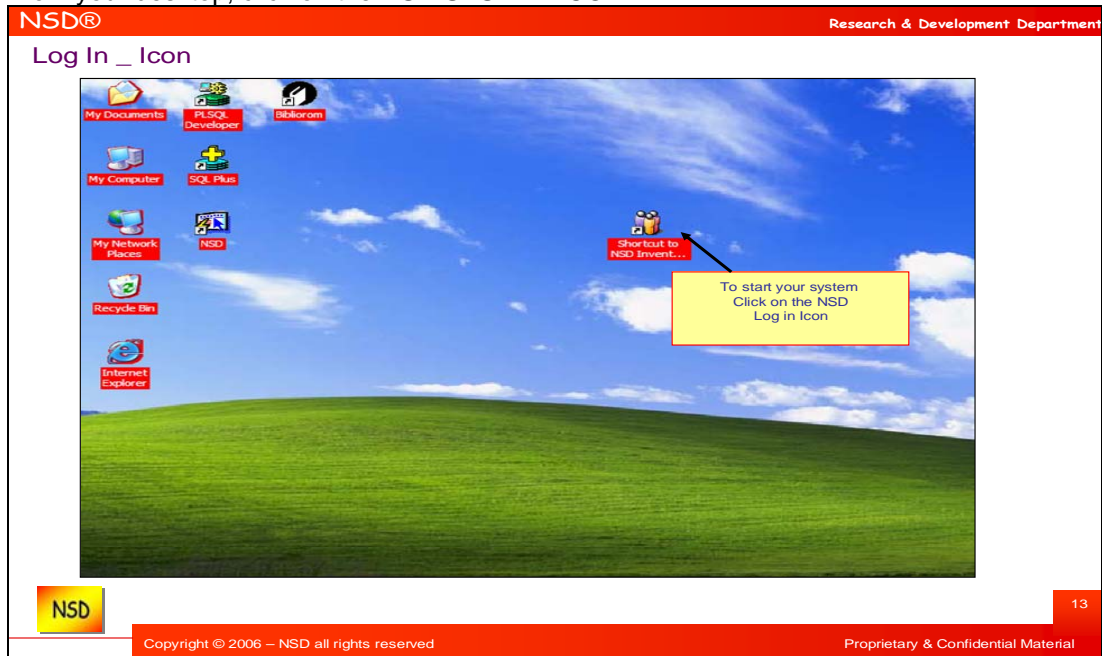
#### 4. Installation of the GUI (Graphical User Interface)

#### 5. Implementation and customization of the system.


The success of the system's installation is based on a close collaboration between your project team and the NSD or the integrator team.

Once you GO LIVE and you have a production system, your users can use and enjoy the System.

From your desktop, click on the NSD SYSTEM ICON

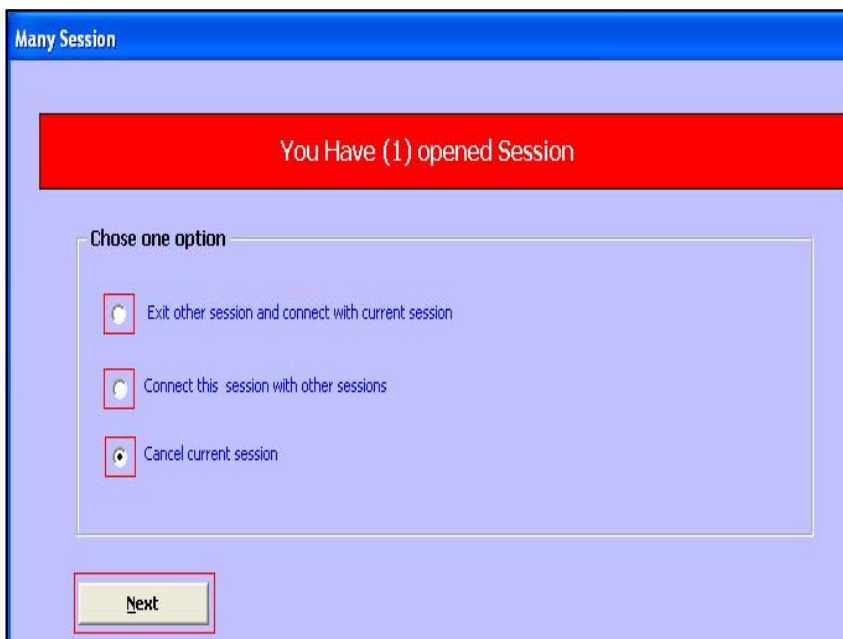






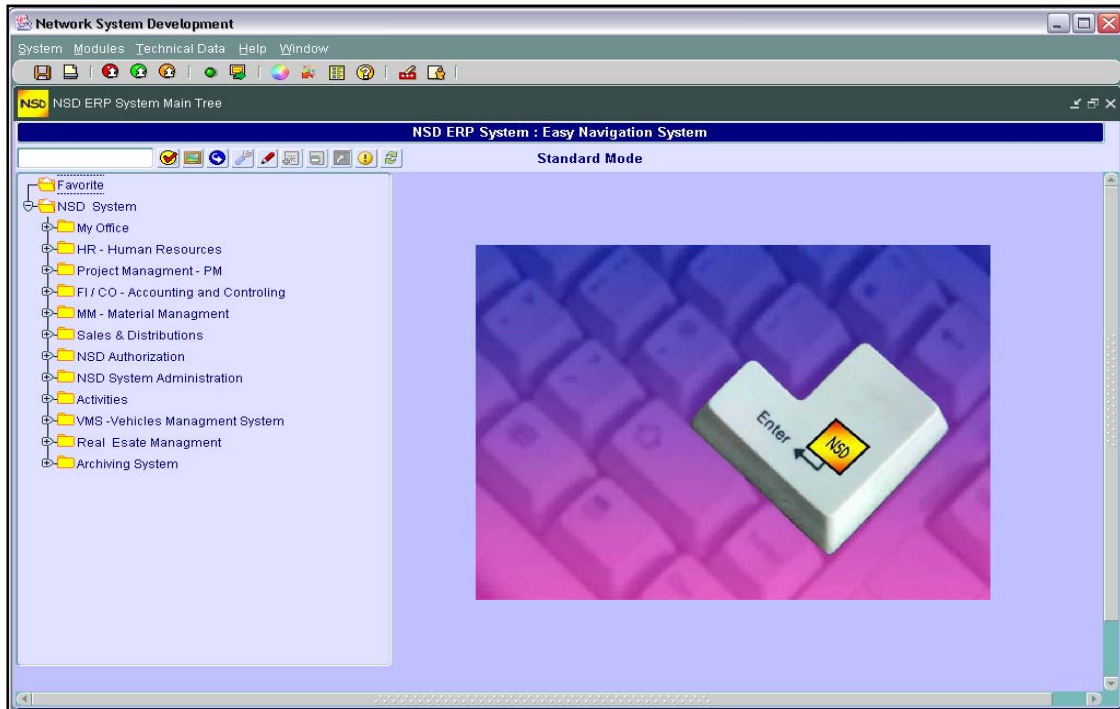
Enter your, user name, password, client and the connection language.

In NSD System you can open more than one session. In this case, once you are connected again, the system alerts you by the below messages and gives you the indicated possibilities.

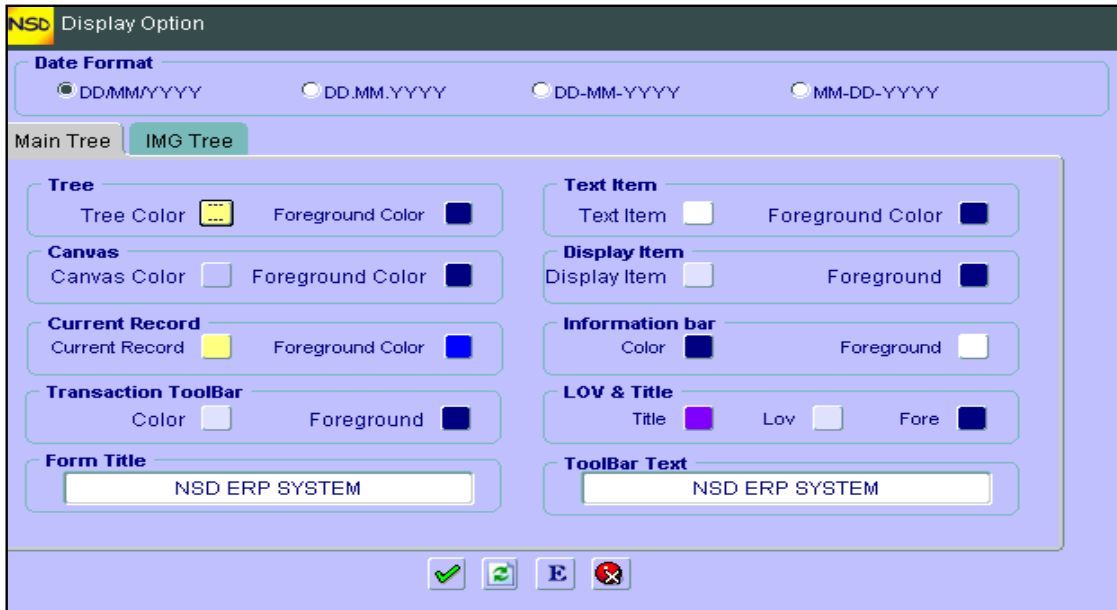


## NSD ERP SYSTEM – ENGLISH VERSION

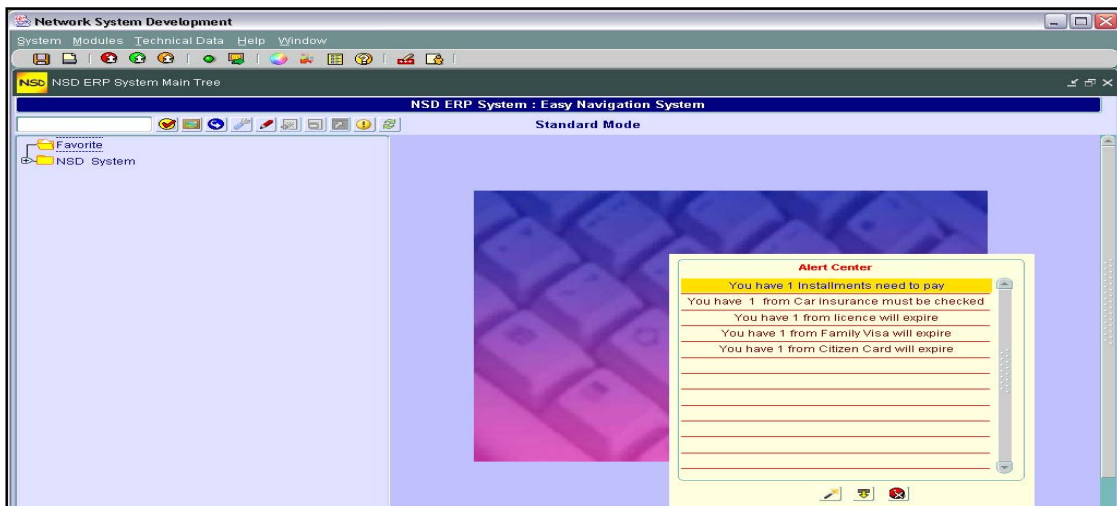
### NSD System – Main Screen (Main Tree)



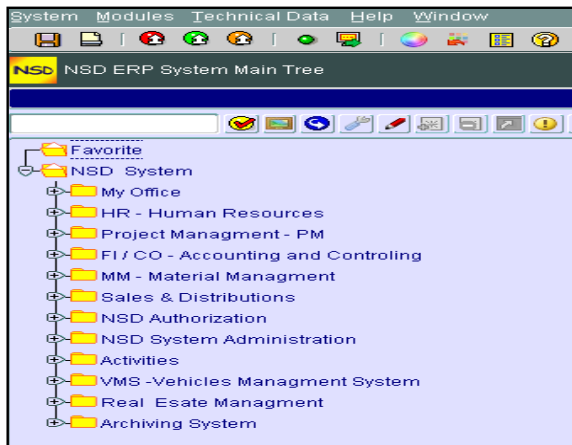
Personalize your system as you like, just click on the design icon and put your personnel data



NSD System – Main Screen (Main Tree)



## NSD ERP – Functionalities Summary



NSD ERP System includes the following applications and functionalities:

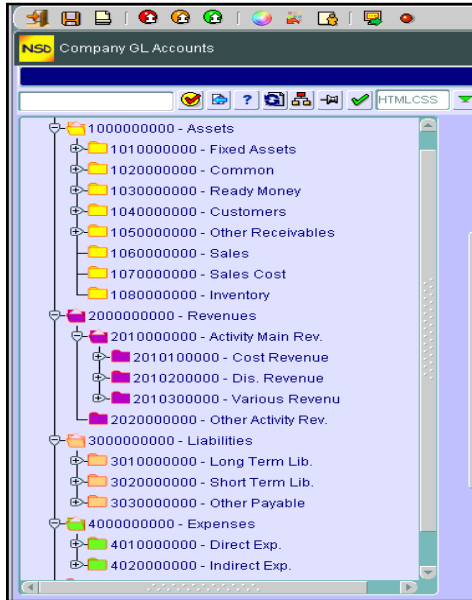
- **Financial (Accounting)**
- **Human Resources (Personnel Administration, Time Management, Payroll, Recruitment, Organization Management.....)**
- **Logistics (Materials Management, Warehousing, Procurement, Purchasing, Inventory.....)**
- **Sales and Distribution and Retails (Point of Sale System)**
- **Production Management**
- **Project Management**

In addition to the above main applications, the NSD system includes, also:

- **My Office**
- **System Administration**
- **System Authorization**
- **Activities (Rent Car Management System – Collision Management System – Clinic Management System – Access Control System (Reception Management System)).**
- **And more .....**

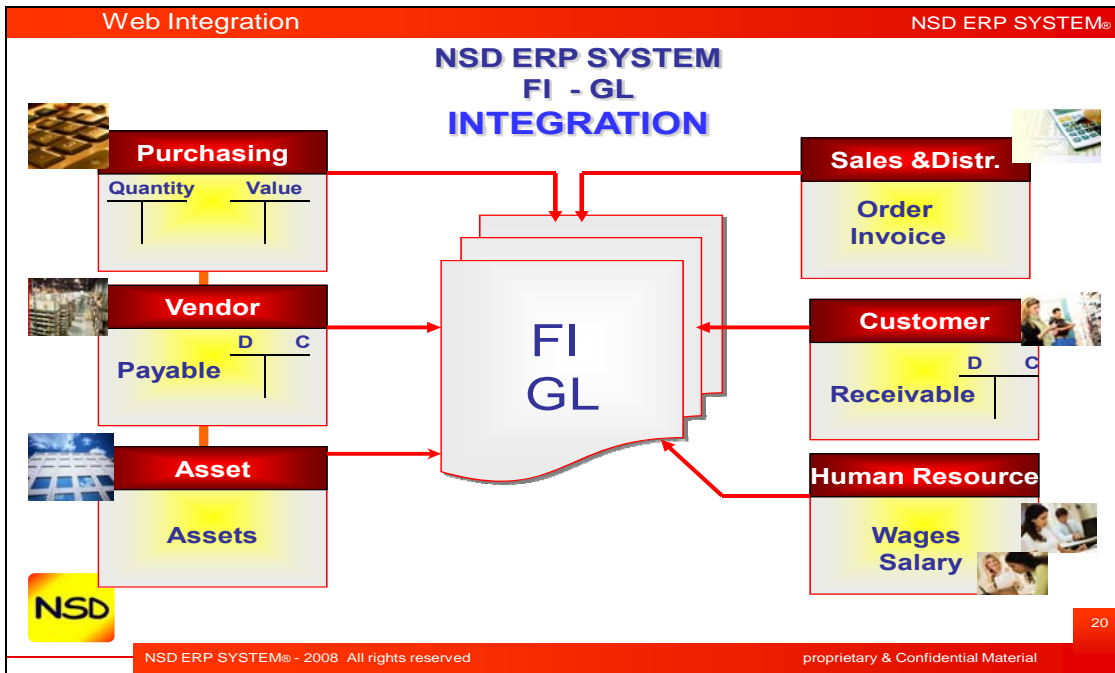
## NSD ERP - Financial Accounting Module (FI)

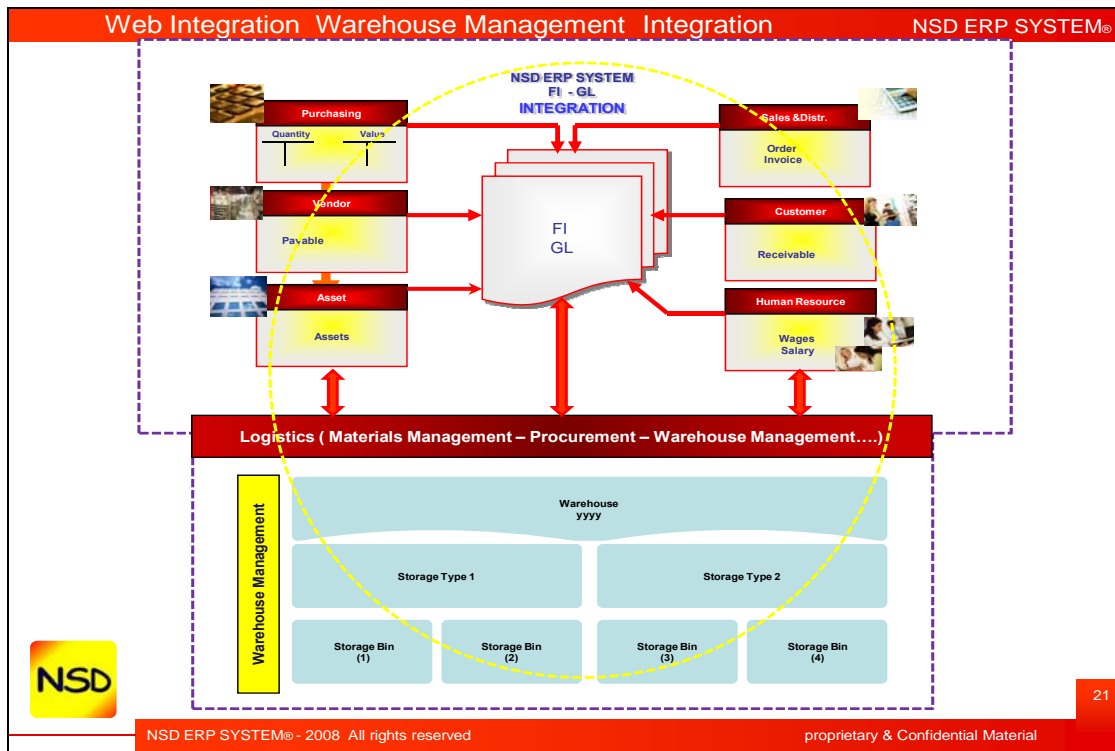
NSD Application modules GL / Structure



System is a flexible and customizing system; part of Account (GL Management) is built for easy use

Financial Integration





Financial Accounting (FI) in NSD ERP System is divided into the following areas and it is designed for an automated management and external reporting of:

- ▶ **General Ledger Accounting**
- ▶ **Cost Center Management**
- ▶ **Profit Center Management**
- ▶ **Accounts Receivable.**
- ▶ **Accounts Payable, and Other Sub-ledger Accounts with a Pre-defined Chart of Accounts.**
- ▶ **Asset Management**
- ▶ **Bank Accounting Management (Bank Book and Bank Reconciliation)**
- ▶ **Cash Management (Cash Book)**
- ▶ **Depreciation Management**
- ▶ **Cheque Printing System**



## BACKGROUND

The General Ledger (G/L) module is the central integrating component in FI. Each account used for posting is defined in the G/L and contains information that reflects or describes its function. This information is stored in the master record of an account.

The central task of G/L accounting is to provide a comprehensive picture for external accounting. Recording all business transactions (primary postings as well as settlements from internal accounts in a software system that is fully integrated with all the other operational areas of a company ensures that the accounting data is always complete and accurate.

Actual individual transactions can be checked at any time in real-time processing by displaying the original documents, line items, and transaction figures at various levels such as:

- **Account information;**
- **Journals;**
- **Totals/transaction figures;**
- **Balance sheet/profit and loss evaluations.**

## ORGANIZATION STRUCTURES and Definition (NSD System Terminology)\*

The key organizational elements in the NSD Financial Accounting System consist primarily of:

- **Company Code**
  - **Chart of Accounts**
  - **Business Area**
- **Company Code**

A company code is the smallest organizational unit for which complete, independent accounting can be carried out. This includes the entry of all transactions subject to posting and the creation of all items for legal individual financial statements, such as the balance sheet and the profit and loss statements.

The Company Code organizational element represents the national view of the company. The company code is normally derived directly from the legal entity structure. One legal entity would equal one company code. The Company Code can be defined as the central organization unit that integrates accounting from many different areas within the organization. It controls the publication of balance sheets and profit and loss statements.

- **Chart of Accounts**

The Chart of Accounts can be represented in the NSD system as one of three functions:

- 1) Operational Chart of Accounts;
- 2) Country Chart of Accounts;
- 3) Group Chart of Accounts.

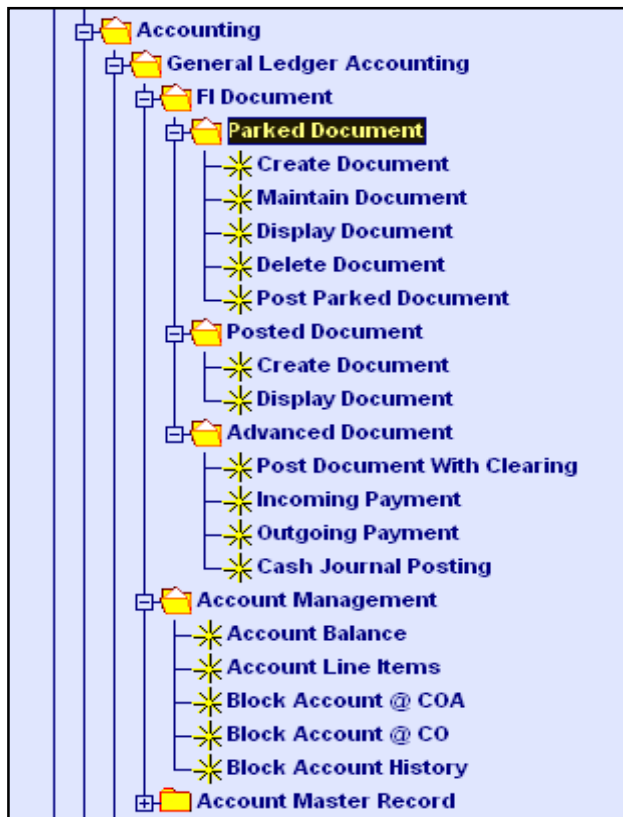
➤ **Business Area**

You can define an organizational unit for internal reporting, in which the transaction figures from G/L accounts are managed separately. This is the business area. The business area is a special unit, for which an internal balance sheet and profit and loss statement can be prepared. The business area is, however, purely an **internal organizational structure**. You define business areas if you want to draw up balance sheets and profit and loss accounts not only for company codes, but additionally for internal areas.

When you prepare the balance sheets and profit and loss statements that are required by law, you must fulfill certain requirements. With an internal balance sheet, however, not all these requirements are fulfilled, since they are not required for internal reporting.

*\* Please note that, in order not to be long in these definitions and terminology of the NSD Financial application, we limit these definitions on the present document to the above terms (Organizational Elements). However, we stay at your disposition to deliver to you a detailed document including all of these Financial Terms.*

### General Ledger Accounting



In NSD System, the General Ledger accounting is built for a maximum security and flexibility.

The document notion (idea) allows the customer to manage all amounts and details posted to the GL accounts

### The NSD - FI General Ledger has the following features:

- 1- Free choice of level
- 2- Corporate group or company
- 3- Automatic and simultaneous posting of all sub-ledger items in the appropriate general ledger accounts (reconciliation accounts)
- 4- Simultaneous updating of general ledger and cost accounting areas
- 5- Real-time evaluation and reporting on current accounting data, in the form of account displays, financial statements with different balance sheet versions and additional analysis. Essentially, the general ledger serves as a complete record for all business transactions.

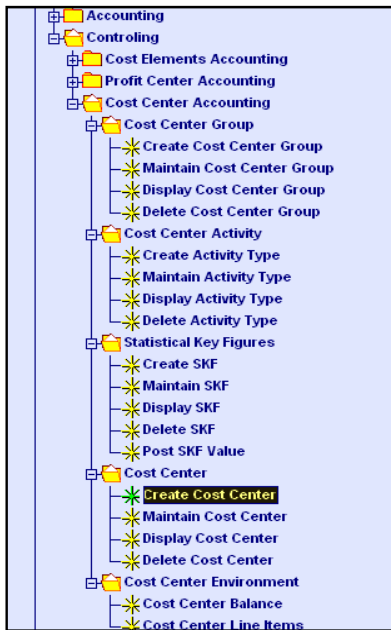
It is the centralized, up-to-date reference for the rendering of accounts. Actual individual transactions can be checked at any time in real-time processing by displaying the original documents, line items and monthly debits and credits at various levels such as:

- Account
- Journals
- Summary of monthly debits and credits (balances)
- Balance sheet/profit and loss evaluations

### Cost Center Management

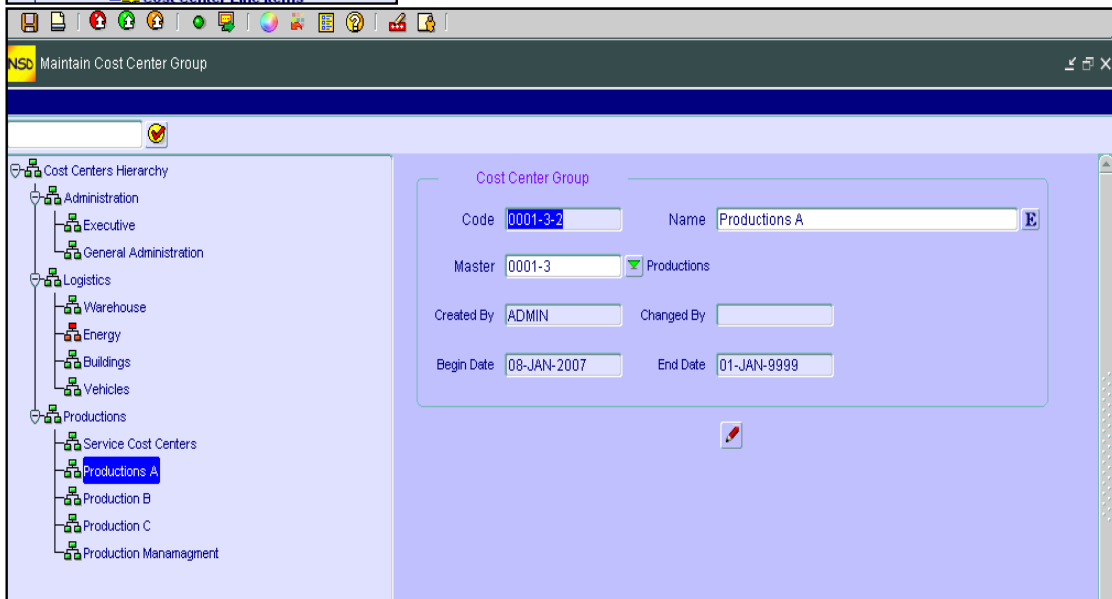
Cost Centre Accounting is a sub-module of CO (Controlling Module). Cost centres enable

the client to be broken down into smaller segments allowing costs to be tracked and controlled. Cost centres are created and grouped in a cost centre “standard hierarchy”. “Alternate hierarchies” can be created (grouping of cost centres in different order – more user specific). Postings in CCA (Cost Centre Accounting) are mainly from other modules. CCA receives postings from FI, Material Management, Human Resources (any transaction that carries a cost centre or that is automatically assigned to a cost centre assignment).

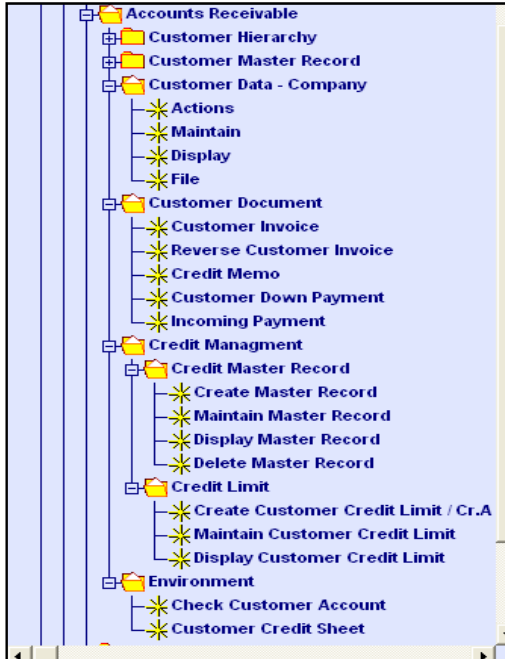


In NSD System, the Cost Centre structure accounting is built for a maximum security and flexibility.

The Controlling Application is based on the cost structure which is completely integrated with the other NSD Applications



Account Receivables



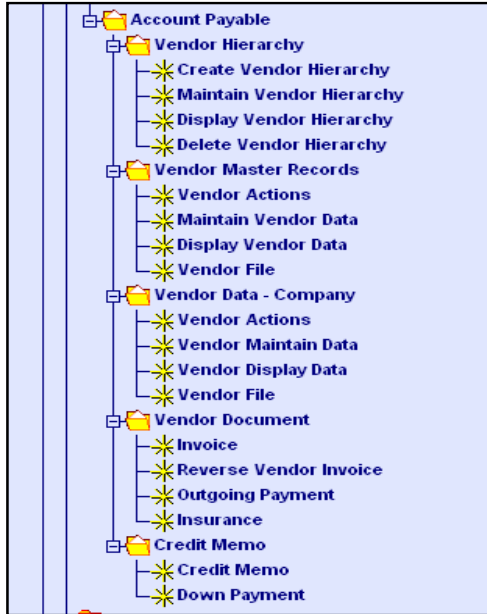
Account Receivables accounting maintains and manages customer accounting data.

When the data is posted in Account Receivables, the system creates a document and passes the entered data to the general ledger.

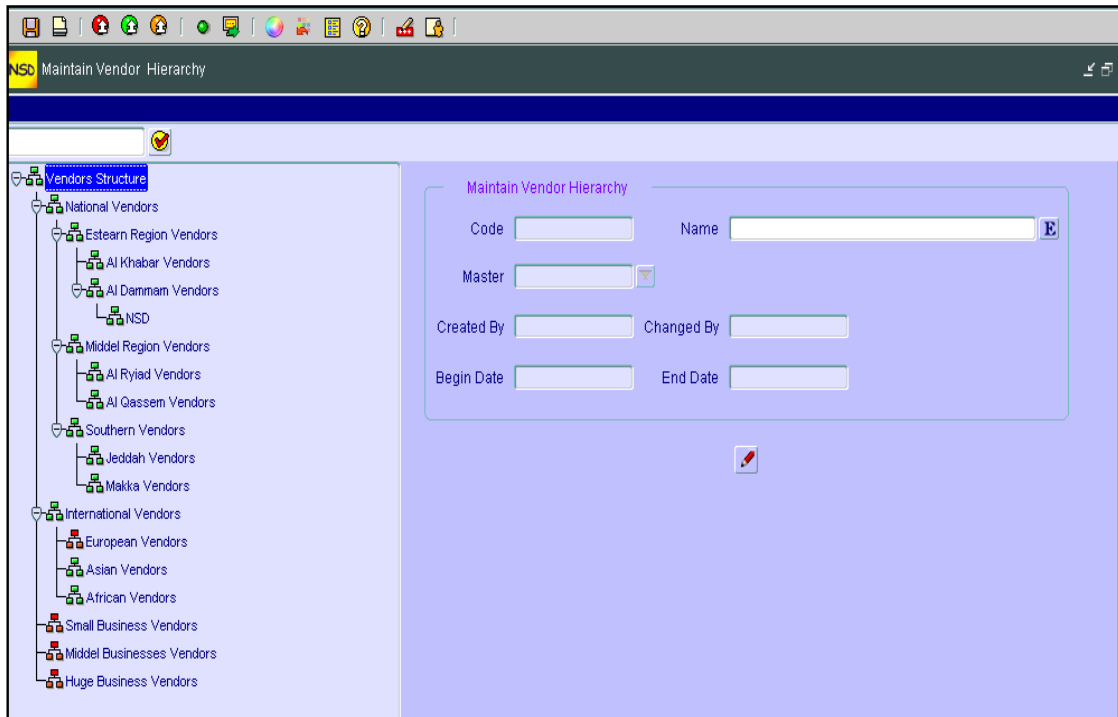
General ledger accounts are then updated according to the transaction concerned.

### Account payables

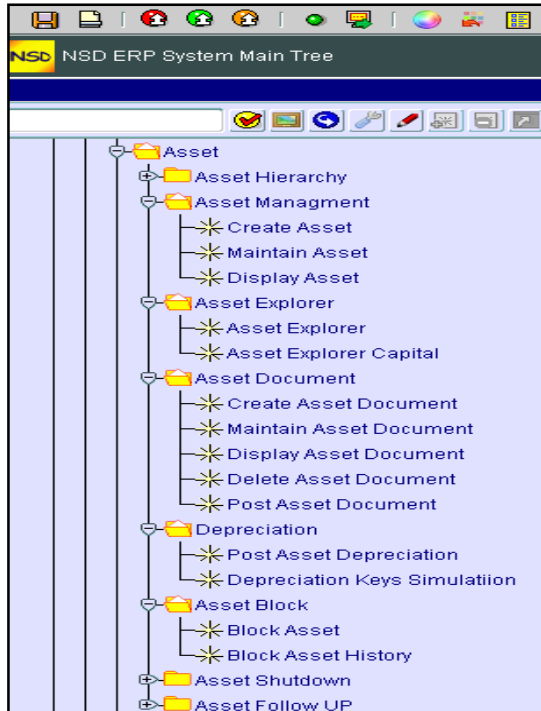
And other sub-ledger accounts with a pre-defined chart of accounts.



The Account Payables application component records and manages accounting data for all vendors. It is also an integral part of the purchasing system. Deliveries and invoices are managed according to vendors. The system automatically triggers postings in response to the operative transactions. In the same way, the system supplies the Treasury Cash Management (TR-CM) application component with figures from invoices in order to optimize liquidity planning.



## Asset Management & Accounting



Asset Accounting is a subsidiary ledger of the General Ledger used for the management and detailed documentation of the accounting transactions related to fixed assets.

The screenshot shows the 'Asset Explorer' application. On the left is a tree view with the following categories:

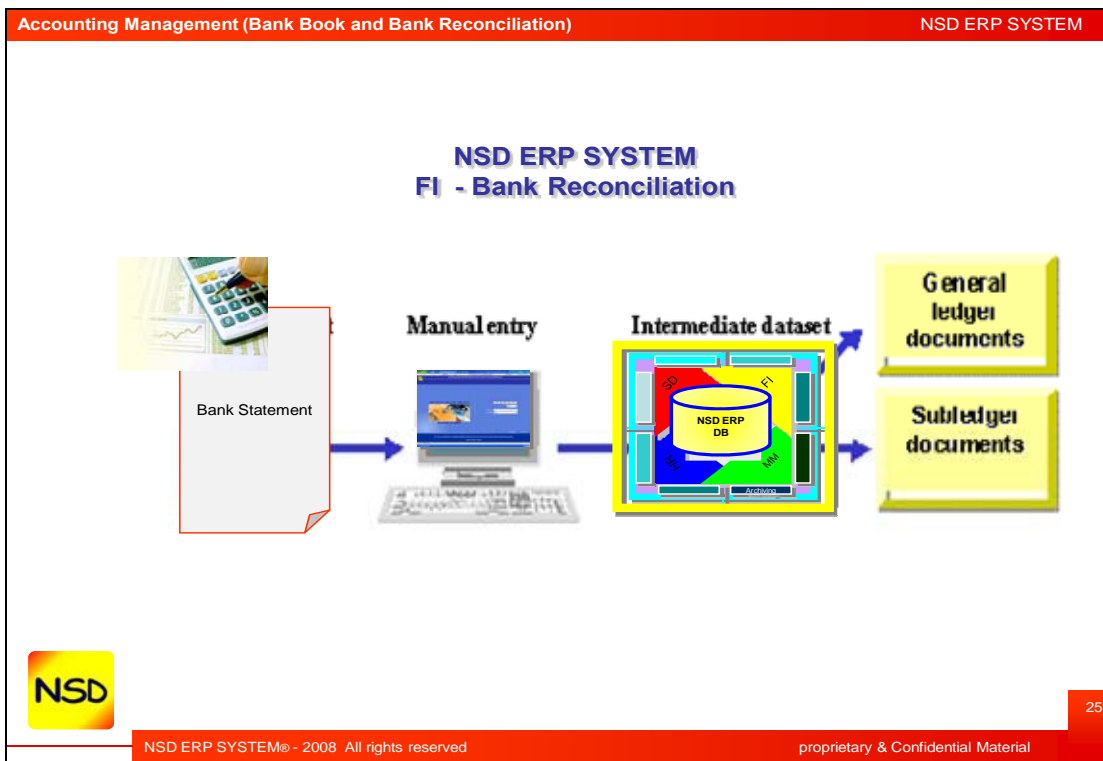
- Machines
  - Heavy Machines
  - Vehicles
  - Industrial Machines
- Furniture
  - Desks
  - Office
  - Chairs
- Electronical Equipment
  - Refrigerator
  - Televisions
- Real Estate
  - Buildings
  - Lands

On the right, a table displays asset data. The table has the following columns: Asset No, Sub, Description, Main Asset Description, Quantity, and Unit. The table is currently empty.

Asset No	Sub	Description	Main Asset Description	Quantity	Unit

At the bottom of the table area, it shows '0 / 1'.

Accounting Management (Bank Book and Bank Reconciliation)





NSD Define Housing Bank

Company 1 Network System Development

H.B Code	Country	Bank Key	Created By	Changed By	Begin Date	End Date
RHJ	sa	R0001	ADMIN		23-NOV-2006	01-JAN-9999

Acc ID	Bank Account	GI Account	Currency
100	0798884	1244444	

Saudi Arabia

- AL Riyad Bank
- AL Rajhi Bank
- AL Ahli Bank

**Bank Data**

Country sa Bank Key 0002  
 Bank Name Al Ahli Bank  
 Created By PAYROLL Changed By  
 Begin Date 25-OCT-2005 End Date 01-JAN-9999  
 Swift Code Bank No 0002  
 Bank Branch

**Street Address**

Street / H. No  
 P. Code / City  
 Country Code sa Saudi Arabia  
 Region SA-01 Al Riyad  
 City SA-C-05 Al Riyad

**P O Box Address**

P O Box Postal Code  
 Company Postal Code

**Communication**

Language AR Arabic  
 Tel 00966 Fax 00966  
 Email  
 Web  
 Comments

## NSD ERP SYSTEM / Financial Module \_ Some Functionalities

### Overview

#### General Ledger Accounting:

General Ledger Accounting supports the following functionalities	
No / Code	Functionalities Description
GL - 01	Define fiscal year and period depending on the requirements
GL - 02	Multi currencies accounting
GL - 03	Define Chart of Accounts Structure
GL - 04	Define new account online
GL - 05	Ability to block any account and register the reason of this block
GL - 06	System supports multi companies
GL - 07	System contains currencies exchange rate and user can modify the exchange rate but system will keep history of old exchange rate
GL - 08	Ability to define currency for each account and enter controlling data related with this account
GL - 09	Accept direct journal entries
GL - 10	Reversing journal entries
GL - 11	Support direct editing of journal entries
GL - 12	Journal and journal entry ID number report
GL - 13	Journal entry date report
GL - 14	Journal entry description report
GL - 15	Journal entry amount report
GL - 16	Journal entries report
GL - 17	Ability to open or close posting period
GL - 18	Controlling transactions that posted
GL - 19	Ability to do auto post for journal or manual post
GL - 20	Ability to display any transaction and maintain it if it is not posted
GL - 21	Ability to check account balance for specific period and fiscal year
GL - 22	Ability to check account line items for specific period, fiscal year and account
GL - 23	Ability to display account open line items
GL - 24	Ability to display closed line items
GL - 25	Ability to display reverse or clearing line items
GL - 26	Fixed asset depreciation and gain/loss entries report
GL - 27	Inventory summary entries report
GL - 28	Cash summary entries report
GL - 29	Create/generate reversal postings for transactions generated from a journal entry posted in error
GL - 30	Multiple open periods
GL - 31	Detailed journal inquiry view to original sub-ledger documents
GL - 32	Transaction/trial balance reports
GL - 33	Trial balance
GL - 34	Profit and loss statement and balance sheet
GL - 35	Comparative balance sheet
GL - 36	Fixed asset reporting
GL - 37	Chart of accounts structure

GL - 38	Check block account history
GL - 39	Ability to block account at company level or chart of account level
GL - 40	Create new account at company level or chart level or centralized
GL - 41	Ability to create account at chart of account level and block it from create at company level
GL - 42	Ability to classify business transaction depending on the requirements
GL - 43	Ability to search any posted or non-posted transaction depending on business transaction, Transaction currency, period, fiscal year or transaction id
GL - 44	Ability to hold any transaction then repost it
GL - 45	Ability to do transaction manual post
GL - 46	Ability to check exchange rate difference
GL - 47	Ability post incoming or outgoing payment directly
GL - 48	Ability clear open items

**Account Receivables:****Account Receivables supports the following functionalities**

No / Code	Functionalities Description
AR - 01	Ability to define customer hierarchy
AR - 02	Ability to define customer structure
AR - 03	Ability to block customer account
AR - 04	Ability to manage customer credit limit
AR - 05	Ability to enter customer general data like customer address, customer contact persons, customer payment data
AR - 06	Ability to maintain customer master data
AR - 07	Ability to display customer master data
AR - 08	Ability to display customer profile screen by screen with easy navigation method
AR - 09	Create relationship between customer master record and reconciliation account
AR - 10	Ability to define multi customer kind depending on the company requirements
AR - 11	Search customer master data with easy method
AR - 12	List customer by customer name
AR - 13	List customer by credit limit
AR - 14	List customer by customer type
AR - 15	List customer addresses
AR - 16	List customer currencies
AR - 17	List customer
AR - 18	List customer by customer code
AR - 19	Ability to enter customer invoice
AR - 20	Ability to enter incoming payment
AR - 21	Ability to clear customer open item
AR - 22	Ability to manage customer cash discount depending on terms of payment
AR - 23	Accept credit memo and debit memo
AR - 24	Print customer account statement
AR - 25	Print customer dunning letter
AR - 26	List customer invoices and filtering it by multi criteria
AR - 27	Check customer balance
AR - 28	Check customer open transaction
AR - 29	Check customer close transaction
AR - 30	Check customer all transaction
AR - 31	Ability to reverse customer invoice or transaction

AR - 32	Ability to manage exchange rate
---------	---------------------------------

**Account Payables:**

Account Payables supports the following functionalities	
No / Code	Functionalities Description
AP - 01	Ability to define vendor hierarchy
AP - 02	Ability to define vendor structure
AP - 03	Ability to block vendor account
AP - 04	Ability to enter vendor general data like vendor address, vendor contact persons, vendor payment data
AP - 05	Ability to maintain vendor master data
AP - 06	Ability to display vendor master data
AP - 07	Ability to display vendor profile screen by screen with easy navigation method
AP - 08	Create relationship between vendor master record and reconciliation account
AP - 09	Ability to define multi vendor kind depending on the company requirements
AP - 10	Search vendor master data with easy method
AP - 11	List vendors by vendor name
AP - 12	List vendors by vendor type
AP - 13	List vendors addresses
AP - 14	List vendors currencies
AP - 15	List vendors general data
AP - 16	List vendor by vendor code
AP - 17	Ability to enter vendor invoice
AP - 18	Ability to enter outgoing payment
AP - 19	Ability to clear vendor open item
AP - 20	Ability to manage taken cash discount depending on terms of payment
AP - 21	Accept credit memo and debit memo
AP - 22	Print vendor account statement
AP - 23	List vendor invoices and filtering it by multi criteria
AP - 24	Check vendor balance
AP - 25	Check vendor open transaction
AP - 26	Check vendor close transaction
AP - 27	Check vendor all transaction
AP - 28	Ability to reverse vendor invoice or transaction
AP - 29	Ability to manage exchange rate loss or gain
AP - 30	Vendor payment history
AP - 31	Credit balance vendor listing
AP - 32	Vendor analysis
AP - 33	Hold payment at vendor level
AP - 34	Payment processing

**Asset Management and Depreciation:**

Asset Management supports the following functionalities	
No / Code	Functionalities Description
AM-01	Create +Asset master record

AM-02	Create simple asset of complex asset
AM-03	Identify each asset by unique number
AM-04	Enter asset responsible employee
AM-05	Enter the origin of the asset
AM-06	Enter asset address
AM-07	Enter asset structure
AM-08	Enter asset location
AM-09	Enter asset notes and memo
AM-10	Maintain Asset data
AM-11	Display asset data
AM-12	Delete asset data
AM-13	Enter asset description and asset type
AM-14	Acquisition date, cost and AP reference
AM-15	Depreciation expense account
AM-16	Enter depreciation method
AM-17	Track assets by number, description, type, location
AM-18	Depreciation balance, depreciation methods
AM-19	Provide depreciation calculation results for current and future year
AM-20	Asset transactions
AM-21	Current costs
AM-22	Transaction reports: period additions, transfers, disposals, depreciation-- asset/type/department
AM-23	Asset depreciation
AM-24	Depreciation method (the system includes a multiple method of depreciation calculation)
AM-25	Explore all company assets (the exploration means for the users that the possibility to have access to all asset through a unique form – screen)
AM-26	Explore all company asset capital
AM-27	Enter asset transaction
AM-28	Display asset transaction
AM-29	Maintain asset transaction
AM-30	Post asset transaction
AM-31	Connect asset master data with general ledger
AM-32	Calculate and post depreciation
<b>Cash Management :</b>	
<b>Cash Management supports the following functionalities</b>	
No / Code	Functionalities Description
CM -01	Calculation of expected cash resources (sales, AR, field service, miscellaneous cash)
CM -02	Calculation of expected cash uses (purchasing, AP, miscellaneous cash)
CM -03	Forecast effects of cash resources and uses on cash availability
CM -04	Expected pay date maintenance
CM -05	Cash projection reporting
CM -06	Printing of statement of account

**Banks:**

Bank Management supports the following functionalities	
No / Code	Functionalities Description
BM-01	Create bank master record
BM-02	Define bank address and common information
BM-03	Display bank data
BM-04	Maintain bank data
BM-05	Delete bank data
BM-06	List of banks grouped by country
BM-07	Define house bank
BM-08	Attach housing bank with general ledger accounting
BM-09	Maintain housing bank data
BM-10	Display housing bank data
BM-11	Delete housing bank data
BM-12	Check bank balance
BM-13	Check bank line items
BM-14	Check open, close, other line items
BM-15	Enter bank transactions
BM-16	Check status of bank transactions

**Cost Center:**

Cost Center Management supports the following functionalities	
No / Code	Functionalities Description
CC -01	Create cost center group
CC -02	Maintain cost center group
CC -03	Display cost center group
CC -04	Delete cost center group
CC -05	Create cost center activity type
CC -06	Maintain cost center activity type
CC -07	Display cost center activity type
CC -08	Delete cost center activity type
CC -09	Create cost center statistical key figures
CC -10	Maintain cost center statistical key figures
CC -11	Display cost center statistical key figures
CC -12	Delete cost center statistical key figures
CC -13	Create cost center master data
CC -14	Maintain cost center master data
CC -15	Display cost center master data
CC -16	Delete cost center master data
CC -17	Check cost center balance
CC -18	Check cost center line items
CC -19	List cost center transactions
CC -20	Integrate cost centers structure with general ledger

**Profit Center:**

Profit Center Management supports the following functionalities	
No / Code	Functionality Description
PC - 01	Create profit center master record
PC - 02	Display profit center master record
PC - 03	Maintain profit center master record
PC - 04	Delete profit center master record
PC - 05	Integrate profit center, general ledger and other modules
PC - 06	Check profit center balance
PC - 07	Check profit center line items
PC - 08	Check profit center by transactions

## Related Activities

Related to the NDS Software and Integrated solutions, NSD Teams assure you a complete cycle of services as:

- 1 **NSD BCS SYSTEM Implementation**
- 2 **Training & documentation**
- 3 **Maintenance & Upgrade**

### Implementation

Offering proven methodologies, advanced software tools, and best practices to get your NSD solution up and running quickly to contribute into your business goals.

Work with the client to develop an implementation strategy focused on his key priorities.

Create an implementation plan that enables you to manage project scope and evaluate progress along the way.

NSD based implementation methodology

### Training & Documentation

Two type of training are assured by NSD

- 1- Power Users Training
- 2- End Users Training

The above training are started form your acquisition of the NSD BSC until its complete implementation (GO LIVE),

Concerning the documentation, NSD assures you a detailed end users (System Navigation) manual and a power users customizing manual.

### Maintenance & Upgrade

Our Services Maintenance gives the client various options, each designed to keep his NSD BCS SYSTEM solution up and running. These include: NSD Standard Support Includes system performance monitoring, proactive services, and access to NSD experts.